

AMERICAN CHANGER & HOFFMAN MINT



“We’re Changing The Industry”

1400 N.W. 65th Place Fort Lauderdale, Florida 33309

Tel: 954-917-3009 ♦ Fax: 954-917-3079

www.americhanger.com

www.hoffmanmint.com

Toll Free: 800-741-9840

Toll Free: 800-227-5813



AC6007 Flex System Installation Guide (Iris System)

Step 1: Remove main board, relay board, and power supply.

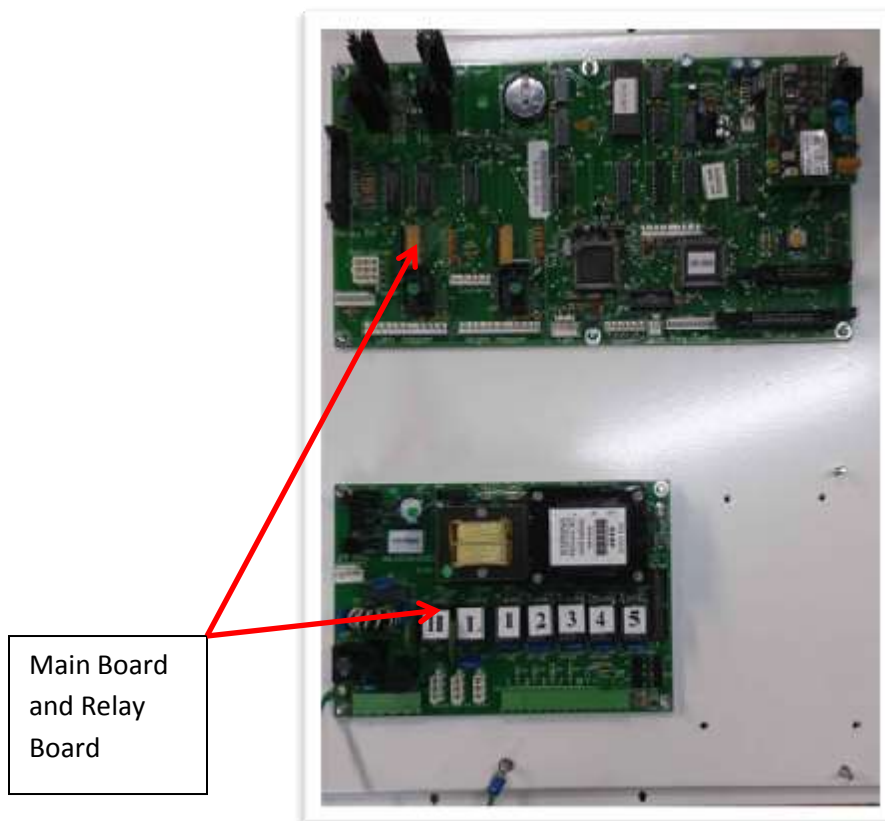


Figure 1

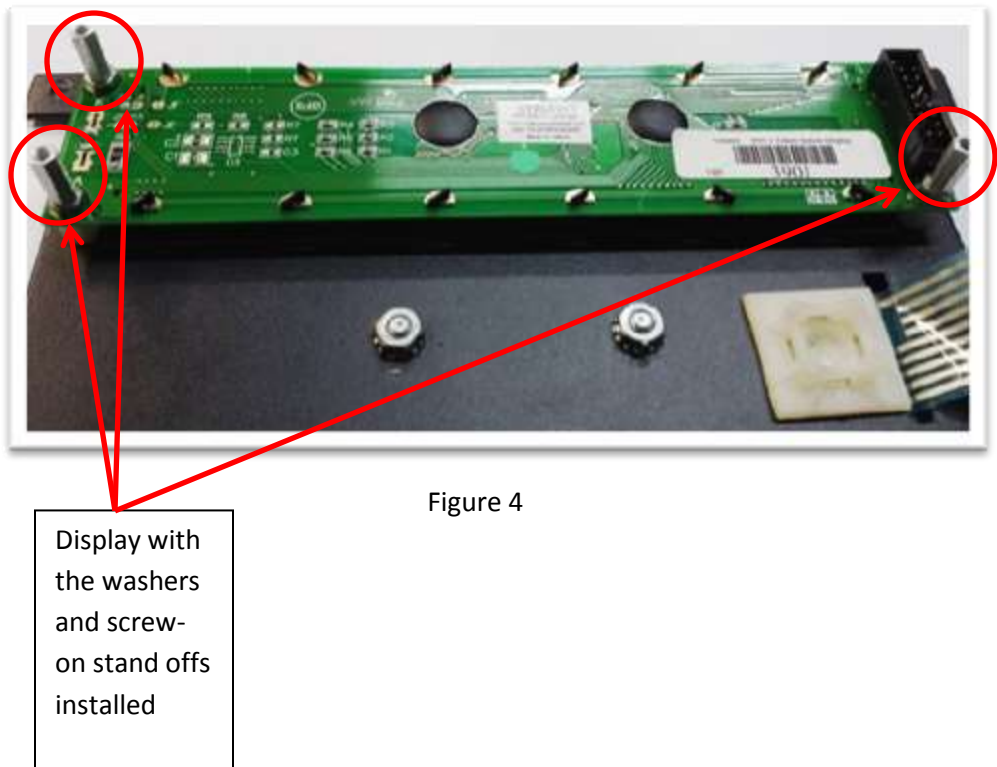
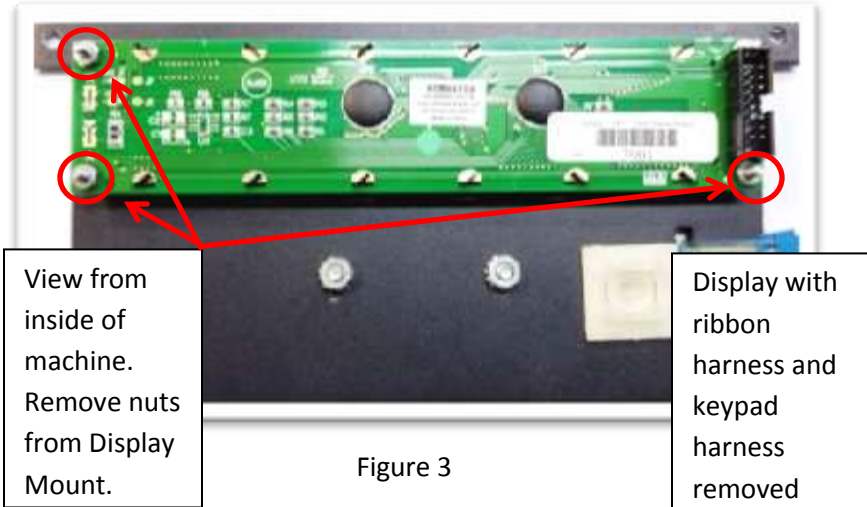
Step 2: Remove all harnesses inside of the cabinet except for the validator harness, hopper harnesses, and printer harnesses.

Step3: Take the new plate with the new board, power supply and Iris Unit on it and mount it in the same location as the old mount that was removed in the first step.



Figure 2

Step 5: Remove the three nuts that are holding the display in place. See Figure 3. Washers and screw on stand-offs were supplied with the kit. Add a washer and a screw on stand-off to the studs that previously had nuts. See Figure 4.



Step 6: Attach the I/O Board to the back of the display by inserting the connector on the I/O Board into the matching connector on the display. Use supplied screws to secure the I/O Board to the stand-offs. See Figures 5 & 6.



I/O Board
Top View



Figure5

Connector

I/O Board
Bottom View



Matching
Connector
on Display



Figure 6

Completed
Display with I/O
Board Installed

Step 7: Connect your marquee in to “#1” on the power board.

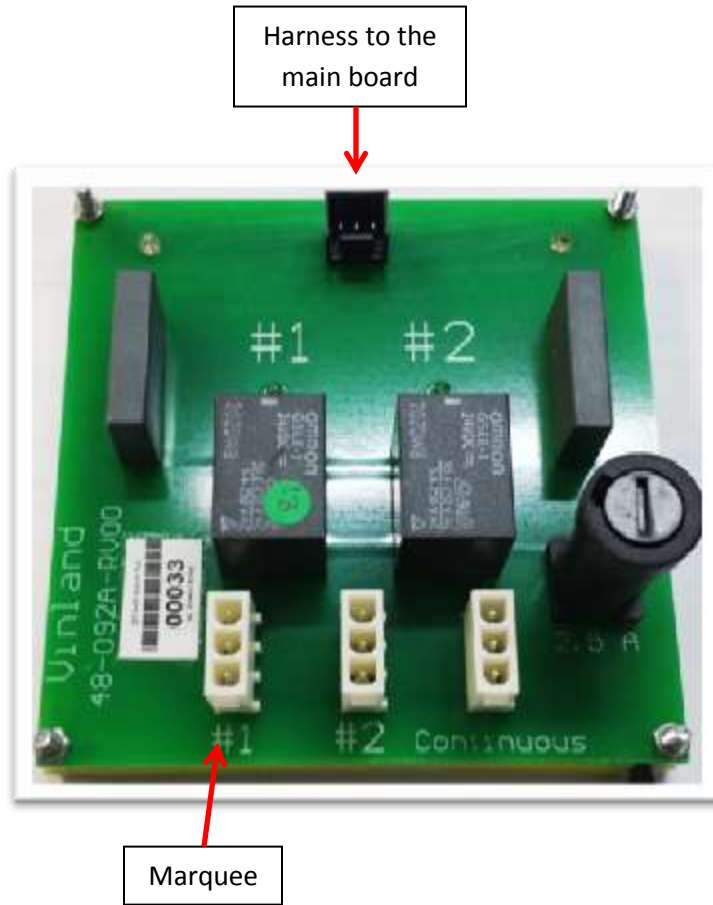
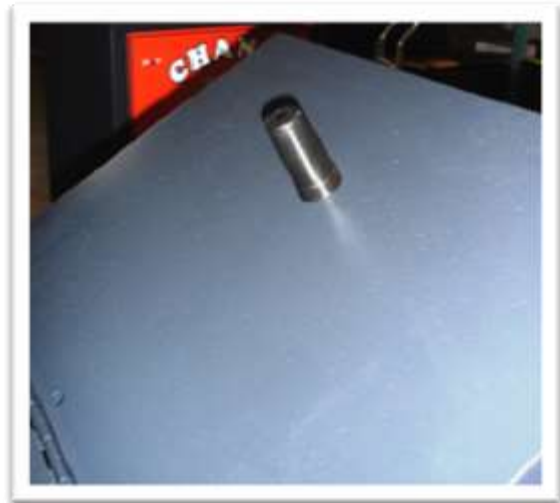


Figure 7

Step 8: If you will be connecting your machine to your local network please proceed to the next step. Remove the marquee from the cabinet. Four screws hold it to the top of the cabinet. Be sure to pull the marquee harness completely through the hole in the top of the cabinet when removing the marquee. Then drill a hole in the top of the marquee to mount the antenna using a 5/8th inch steel hole saw. Mount the antenna, run the harness through the same hole the marquee light harness was ran through, then secure the marquee back on to the top of the cabinet.



Marquee with
hole for
antenna



Marquee with
antenna
mounted

Figure 8

Step 9: Connect the antenna or Ethernet cable to the Iris device.



Front of Iris device.
Connect Ethernet
cable here



Rear of Iris device.
Connect antenna
cable here

Figure 9

Installing the External Keypad

The following steps are used to install the external keypad that came with the kit. This keypad is used to navigate the programming menu as well as input values while in the programming menu. The external keypad can also be used to input a zip code if zip code verification is enabled

Step 10: It is recommended to mount the keypad near the display. Place the keypad against door and use a felt tip marker to mark your four mounting holes. You will also need to mark the area for the harness to connect to the key pad.

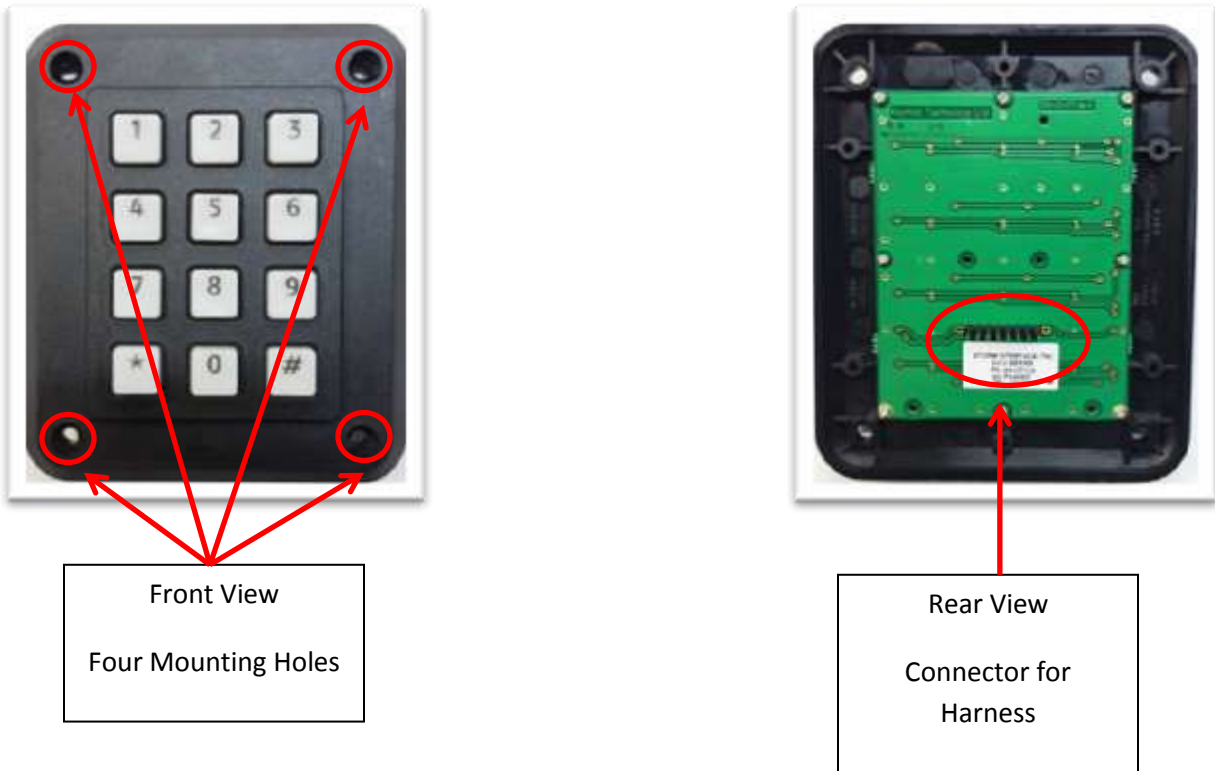


Figure 10

Step 11: Before drilling your holes remove the hoppers from the machine. Using titanium bits drill the holes in the door.

Step 12: Secure the keypad to the door using the supplied screws and nuts.

Step 13: Connect the harness from the I/O Board to the keypad. Connect as shown in the below picture. If not connected properly the numbers will not be recognized correctly.



Figure 11

Step 14: Use the below picture to help with connecting the components to the main board.

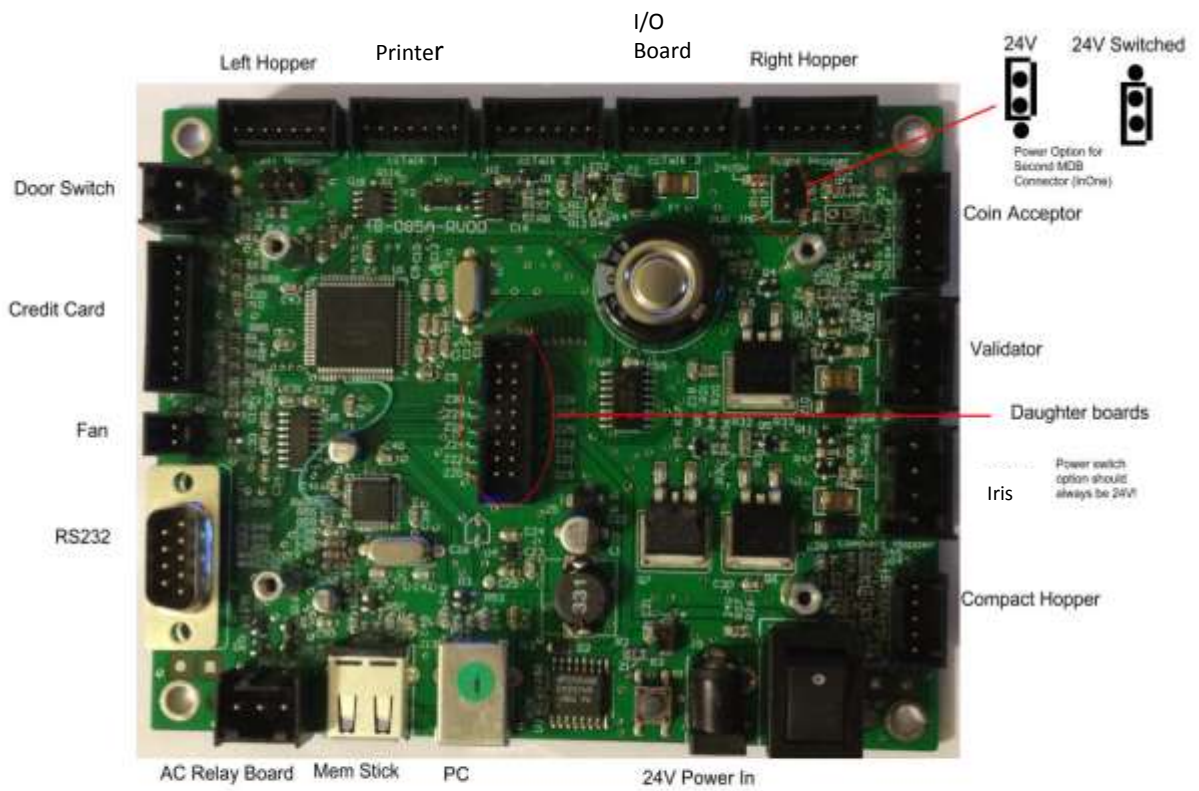


Figure 12

Additional steps for connecting optional adaptor boards

This section details how to connect adaptor boards to the main board. Adaptor boards are not shipped with all orders. These boards will already have the necessary harnesses attached to them. All that will be needed is to connect the component to the adaptor board. If you did not receive any adaptor boards with your order then skip this section.

Step 15: Connect the hopper plate harness to the hopper adaptor board. Then connect the harness that was already attached to the adaptor board to the main board.

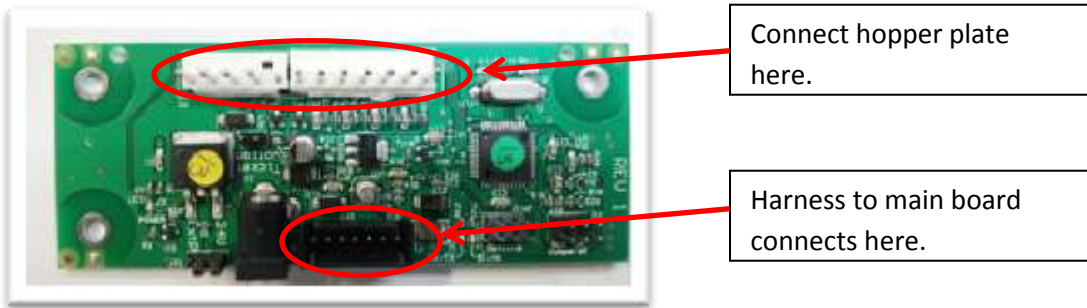


Figure 13

Step 16: Connect the flat “ribbon” style harness from your printer to the adaptor board. Then do the same for the power harness. Again connect the harness that is already attached to the adaptor board to the main board.

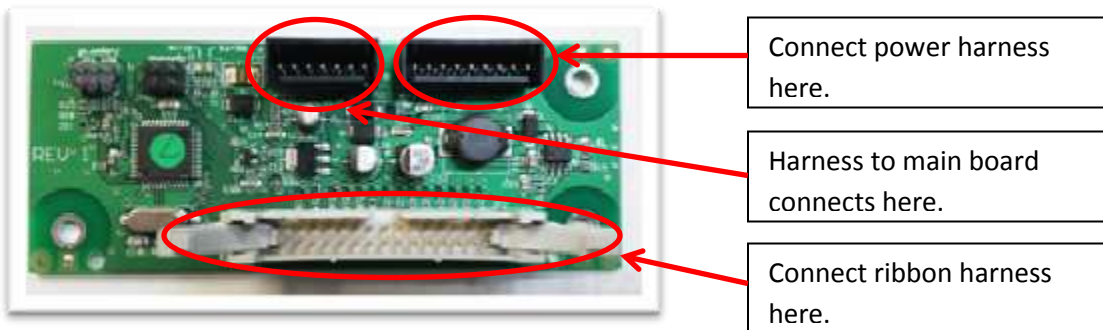


Figure 14

Step 17: Connect the validator harness to the adaptor board. Then connect the harness that is already attached to the adaptor board to the main board.

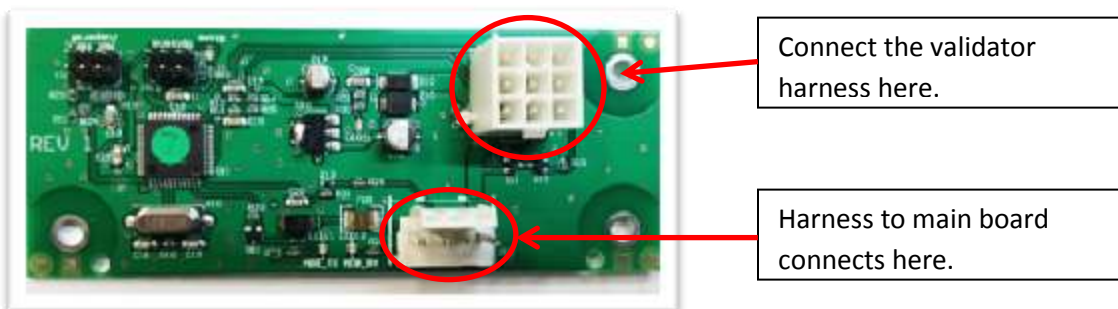


Figure 15