

# AMERICAN CHANGER & HOFFMAN MINT



*"We're Changing The Industry"*

1400 N.W. 65<sup>th</sup> Place Fort Lauderdale, Florida 33309

Tel: 954-917-3009 ♦ Fax: 954-917-3079

[www.americanchanger.com](http://www.americanchanger.com)

[www.hoffmanmint.com](http://www.hoffmanmint.com)

Toll Free: 800-741-9840

Toll Free: 800-227-5813



## AC6007 Flex System Installation Guide (Iris System)

Step 1: Remove main board, relay board, and power supply.

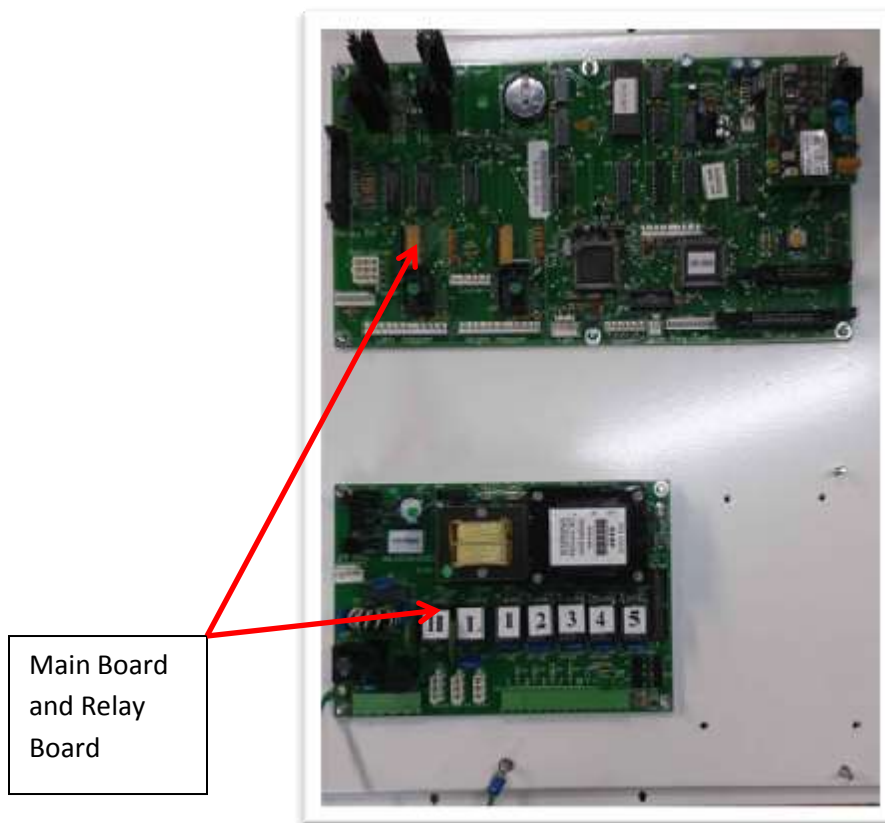


Figure 1

Step 2: Remove all harnesses inside of the cabinet except for the validator harness, hopper harnesses, and printer harnesses.

Step3: Take the new plate with the new board, power supply and Iris Unit on it and mount it in the same location as the old mount that was removed in the first step.

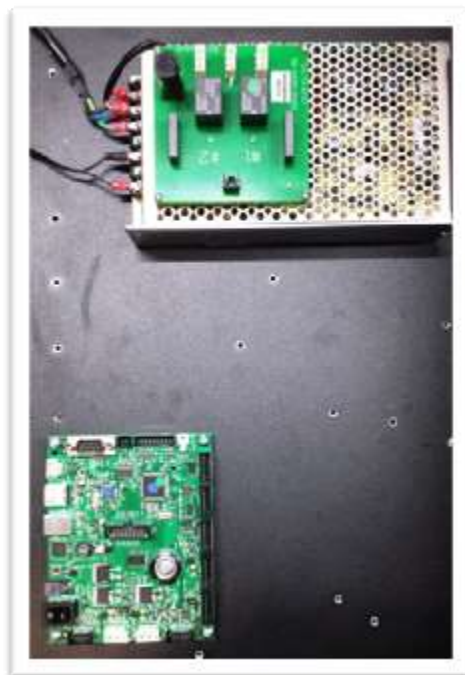
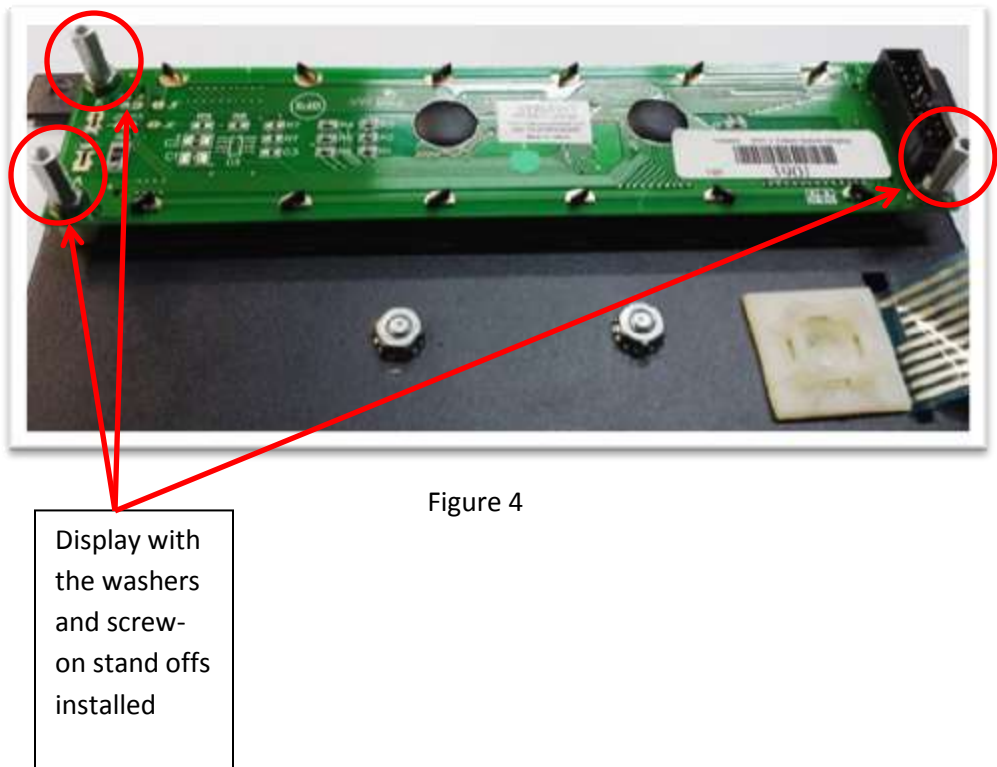
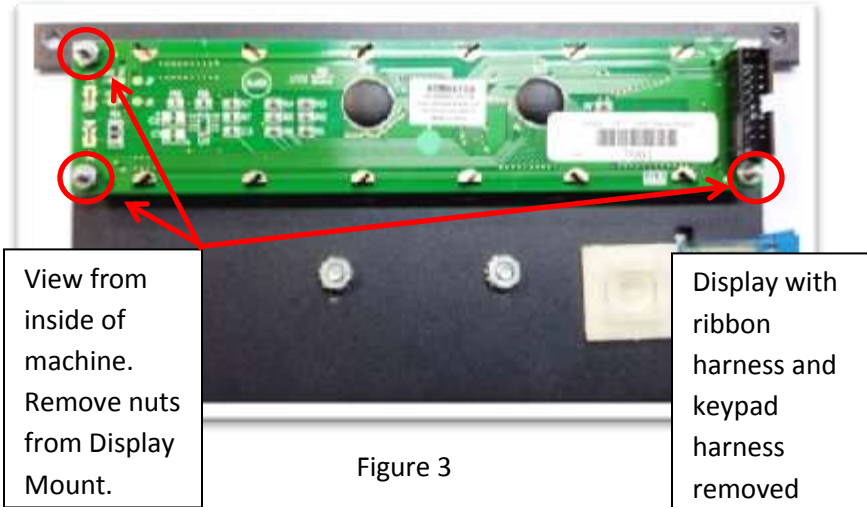


Figure 2

Step 5: Remove the three nuts that are holding the display in place. See Figure 3. Washers and screw on stand-offs were supplied with the kit. Add a washer and a screw on stand-off to the studs that previously had nuts. See Figure 4.



Step 6: Attach the I/O Board to the back of the display by inserting the connector on the I/O Board into the matching connector on the display. Use supplied screws to secure the I/O Board to the stand-offs. See Figures 5 & 6.



I/O Board  
Top View



Figure5

Connector

I/O Board  
Bottom View



Matching  
Connector  
on Display



Figure 6

Completed  
Display with I/O  
Board Installed

Step 7: Connect your marquee in to “#1” on the power board.

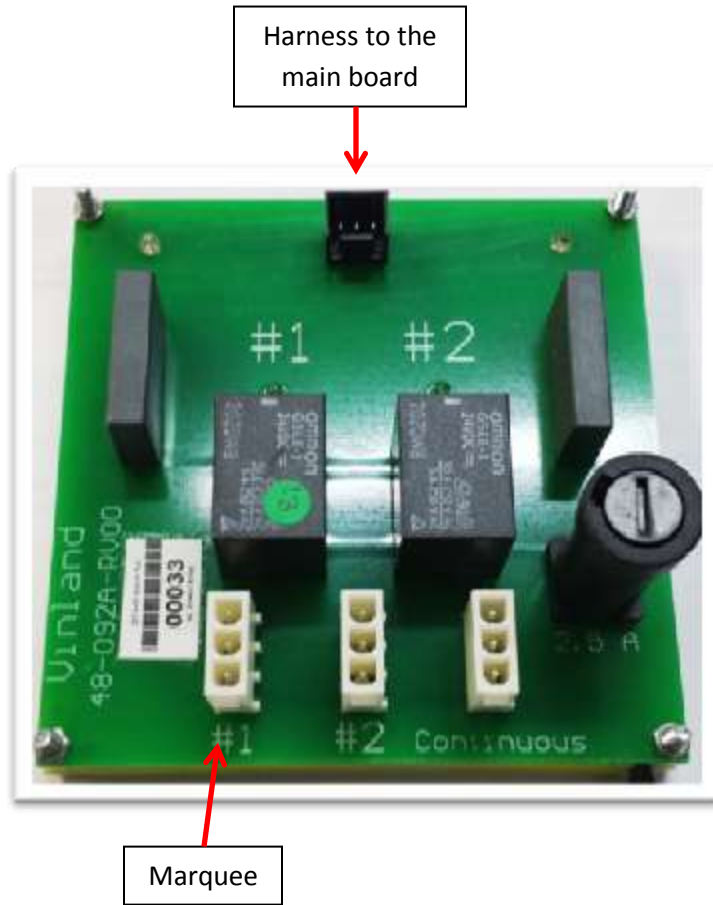


Figure 7

Step 8: Place the Tran Unit flat on the floor of the cabinet. Connect the beige color communication cable, Ethernet cable/phone line, and then connect the power adaptor.

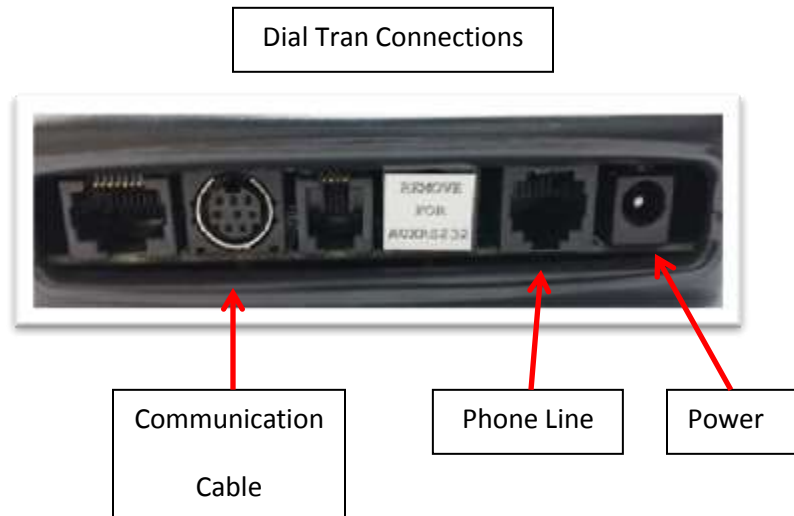
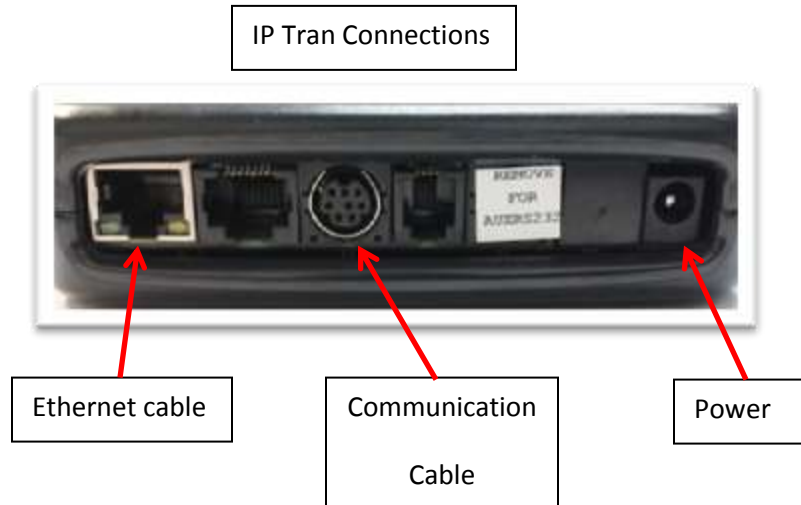


Figure 8

### Installing the External Keypad

The following steps are used to install the external keypad that came with the kit. This keypad is used to navigate the programming menu as well as input values while in the programming menu. The external keypad can also be used to input a zip code if zip code verification is enabled

Step 9: It is recommended to mount the keypad near the display. Place the keypad against door and use a felt tip marker to mark your four mounting holes. You will also need to mark the area for the harness to connect to the key pad.

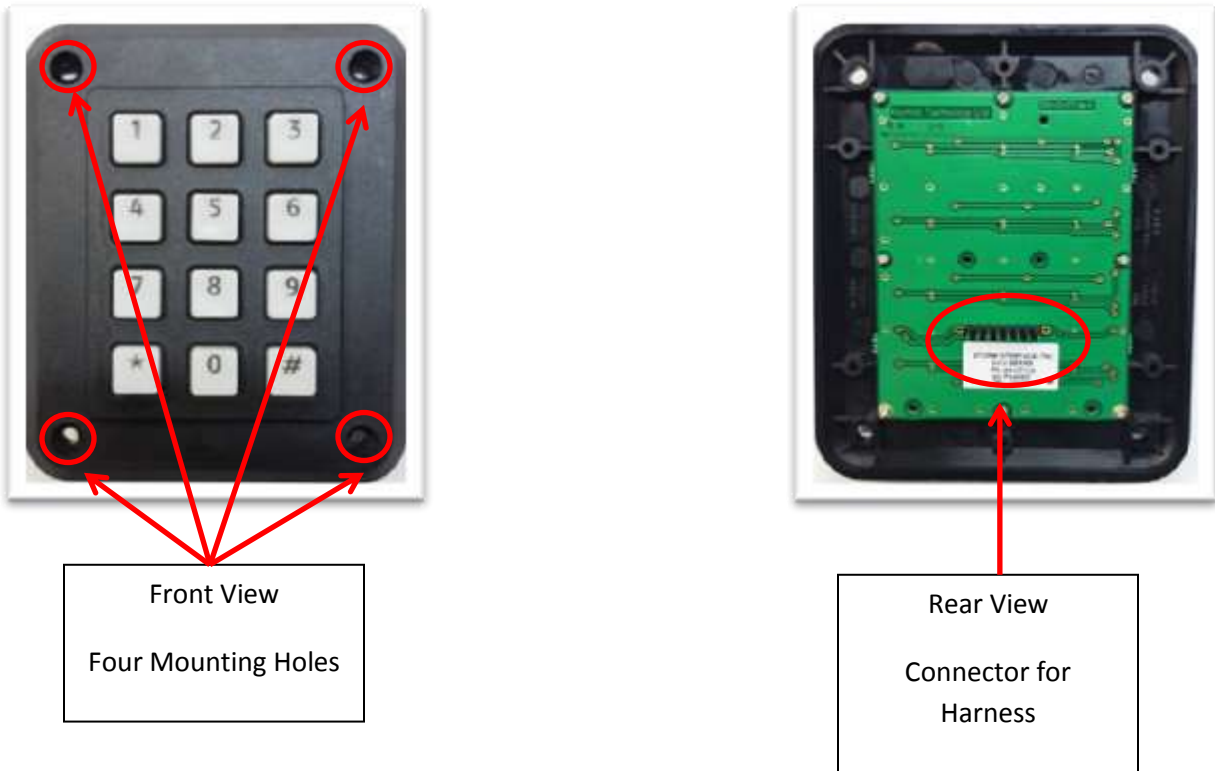


Figure 9

Step 10: Before drilling your holes remove the hoppers from the machine. Using titanium bits drill the holes in the door.

Step 11: Secure the keypad to the door using the supplied screws and nuts.

Step 12: Connect the harness from the I/O Board to the keypad. Connect as shown in the below picture. If not connected properly the numbers will not be recognized correctly.



Figure 10



Step 13: Use the below picture to help with connecting the components to the main board.

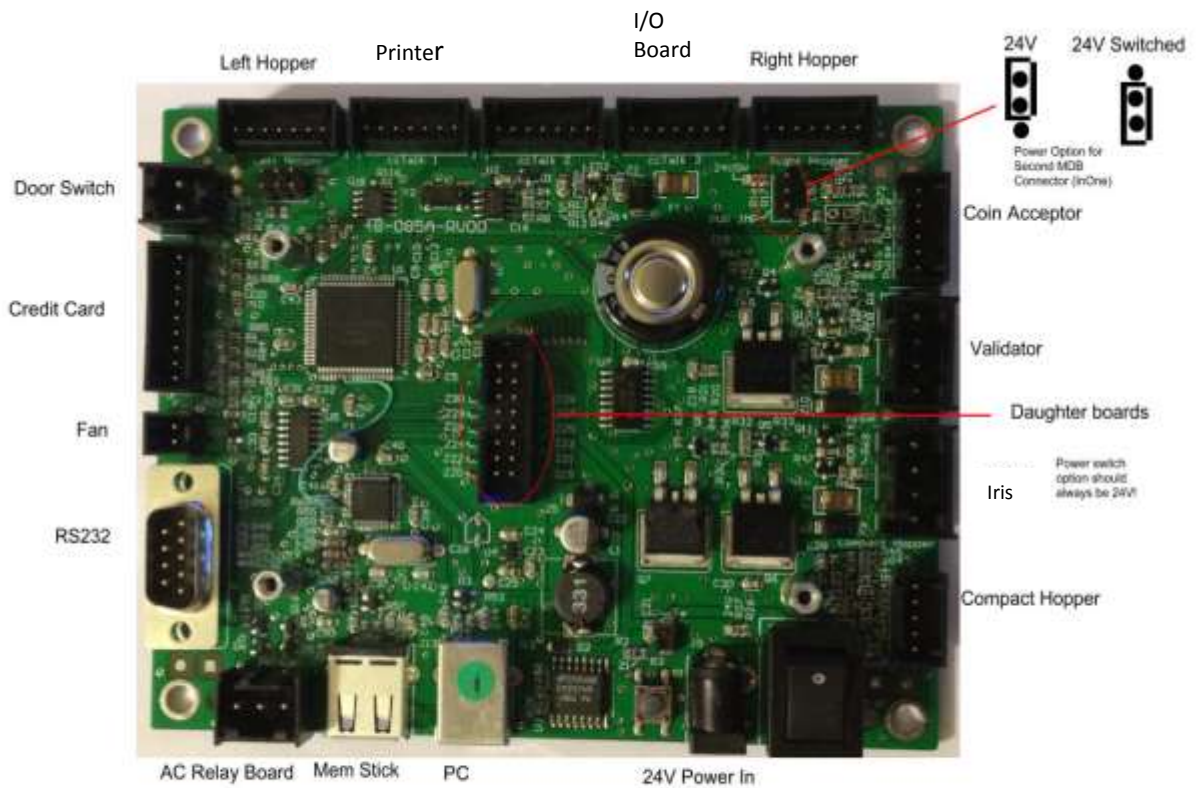


Figure 11

Additional steps for connecting optional adaptor boards

This section details how to connect adaptor boards to the main board. Adaptor boards are not shipped with all orders. These boards will already have the necessary harnesses attached to them. All that will be needed is to connect the component to the adaptor board. If you did not receive any adaptor boards with your order then skip this section.

Step 14: Connect the hopper plate harness to the hopper adaptor board. Then connect the harness that was already attached to the adaptor board to the main board.

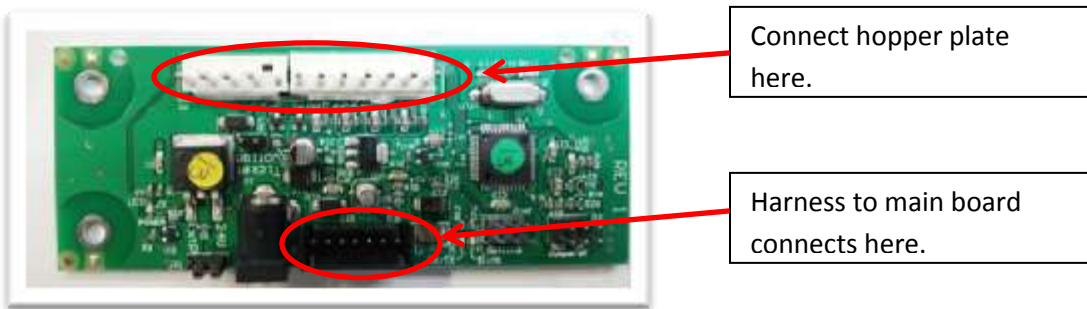


Figure 12

Step 15: Connect the flat “ribbon” style harness from your printer to the adaptor board. Then do the same for the power harness. Again connect the harness that is already attached to the adaptor board to the main board.

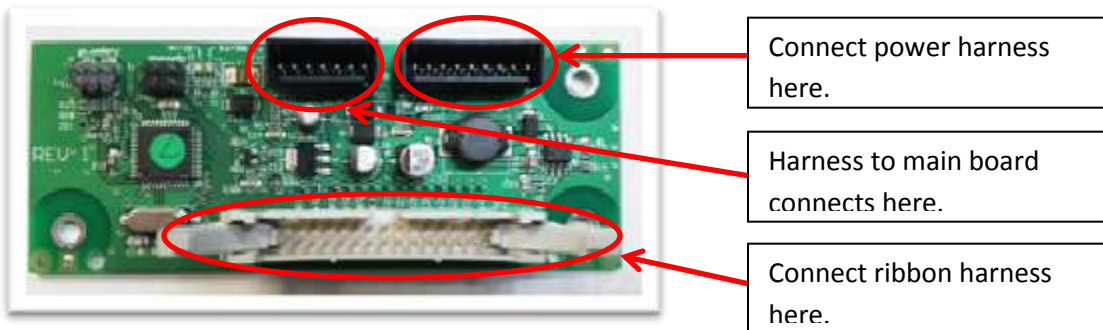


Figure 13

Step 16: Connect the validator harness to the adaptor board. Then connect the harness that is already attached to the adaptor board to the main board.

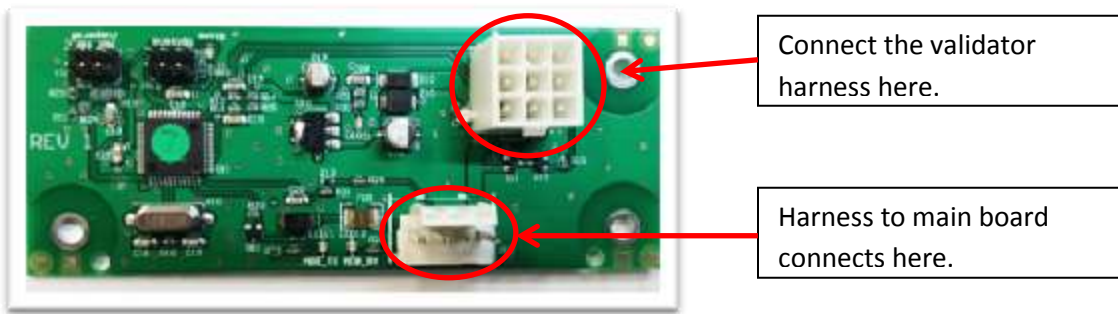


Figure 14