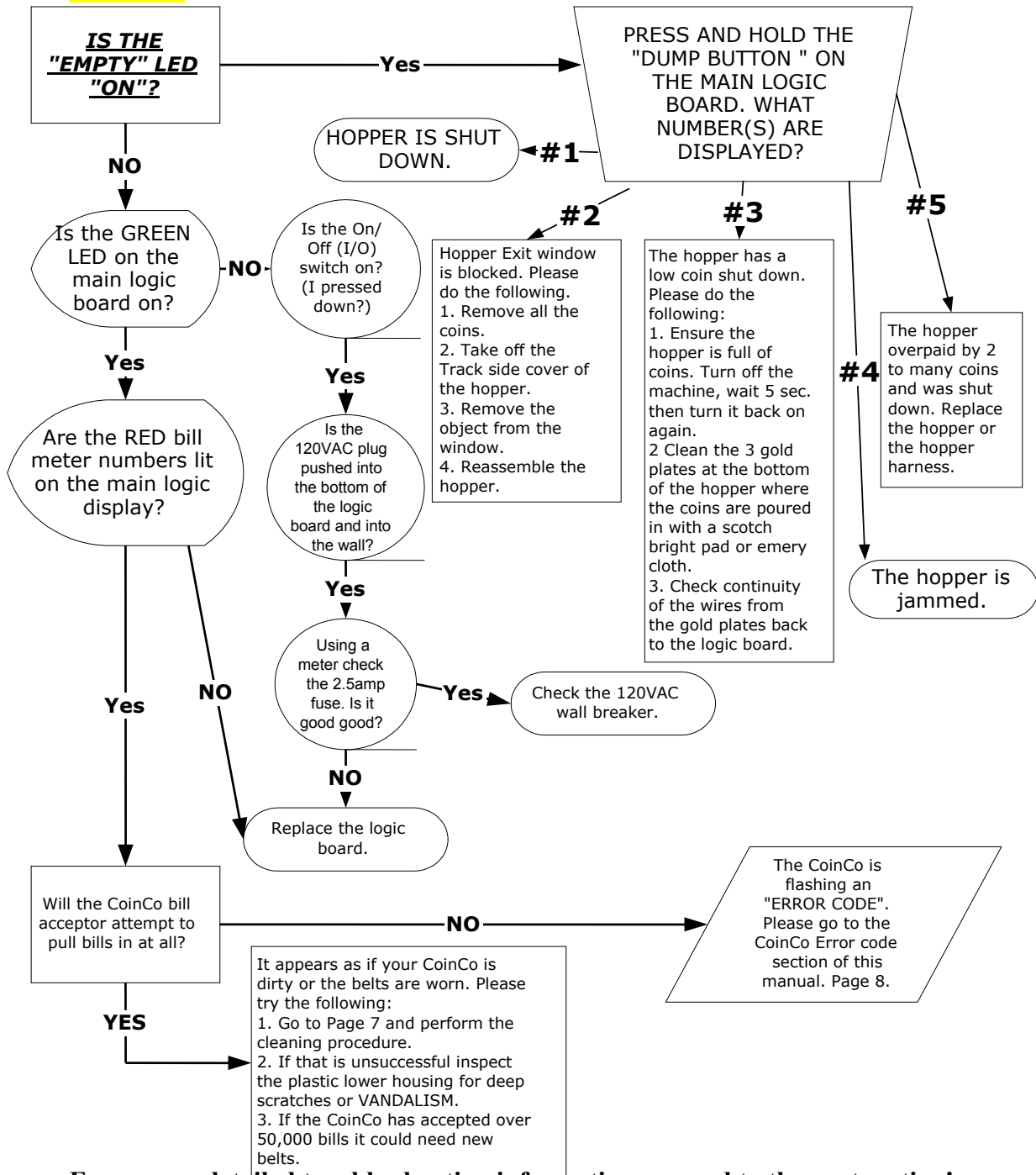


# TECHNICAL FLOW DIAGRAM AC2225

NOTE: Before starting this procedure ensure the changer is plugged in, the ON/OFF switch is on, *the hopper is full of coins, and all wire harnesses are connected securely and correctly.*  
*The wires exiting the red connectors should point away from the board!!*

**Start Here!**



**For a more detailed trouble shooting information proceed to the next section!  
 FOR TECHNICAL SERVICE OR TO OBTAIN A RETURN AUTHORIZATION NUMBER  
 CALL (888) 741-9840**

**ANY REPAIR RETURNED WITHOUT A RETURN AUTH. # WILL BE REFUSED!!**